

Thread Charts & Color

FTCU Masterclass by D.J. Anderson



DEEP
DIVE

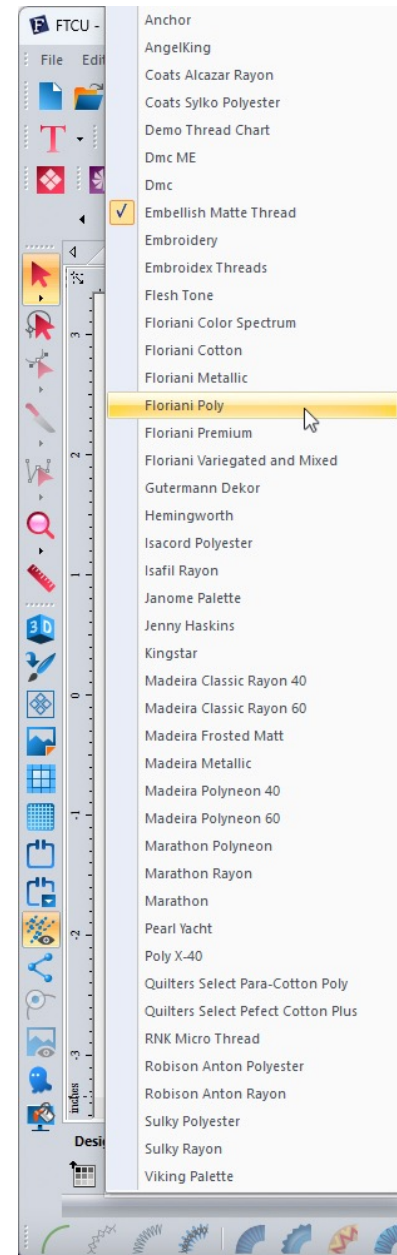
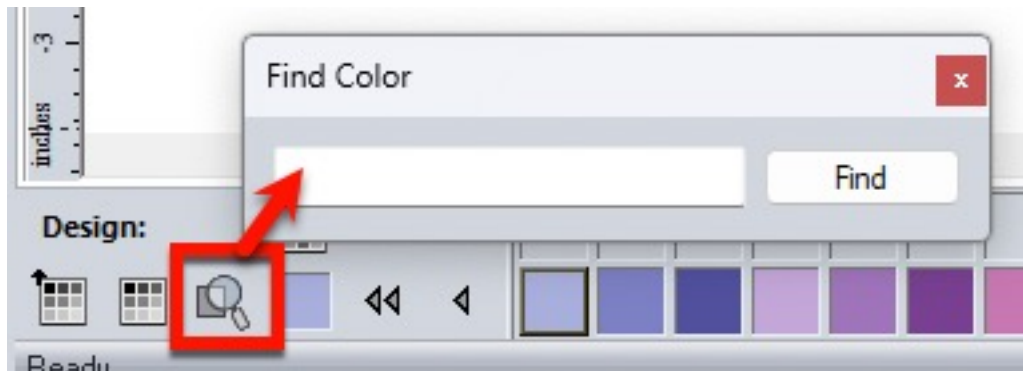
Topics

- Intro to Thread Charts (where they are and how to select them)(why you might want to create your own)
- How to select a default thread chart in Preferences
- How to use the Match Palette feature
- How to use the Popup Palette feature
- How to create thread charts
- How to share thread charts (import/export)



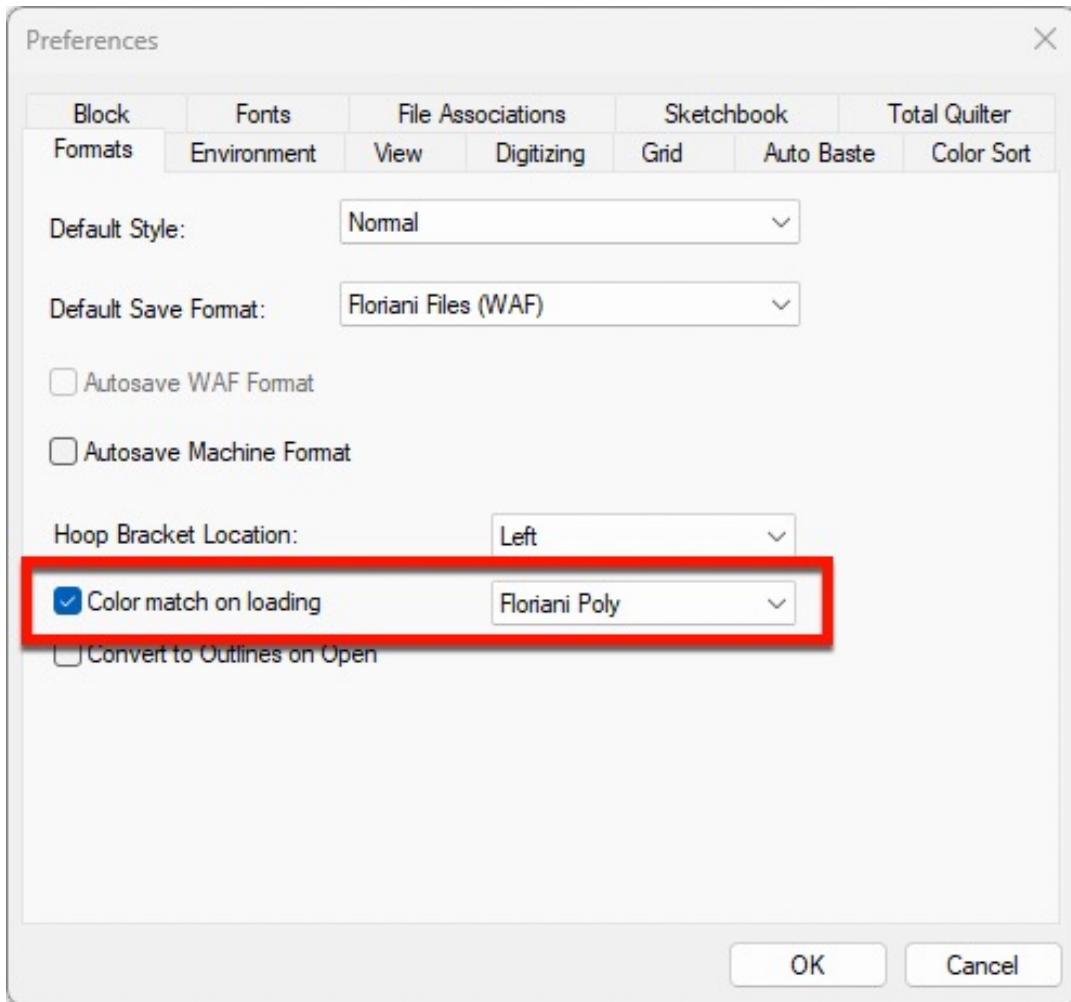
Intro to Thread Charts

- Intro to Thread Charts
- How to search, select, and apply colors from a thread chart to objects in your design.



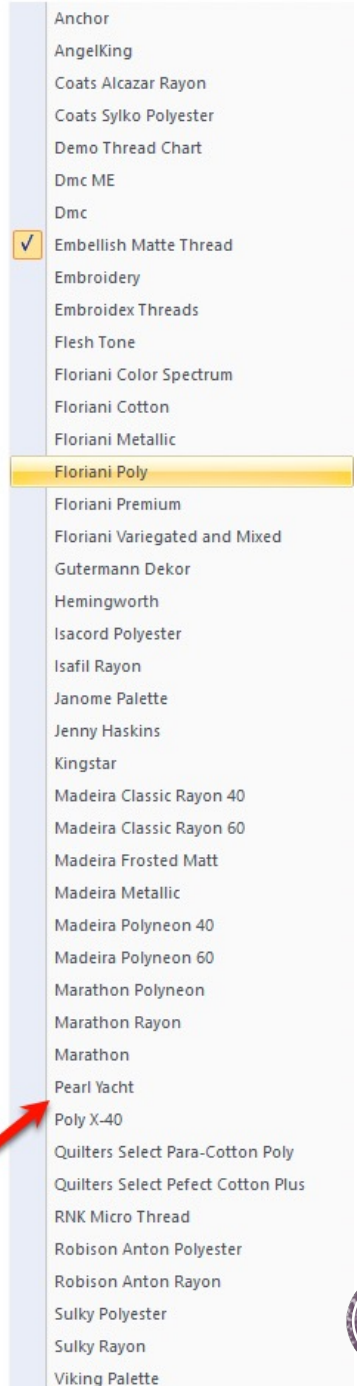
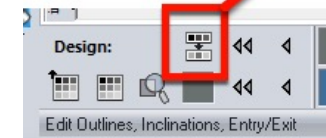
Auto Thread Color Matching

- This allows you to select the thread brand you prefer and have the software automatically color match the thread to your designs when opening them.



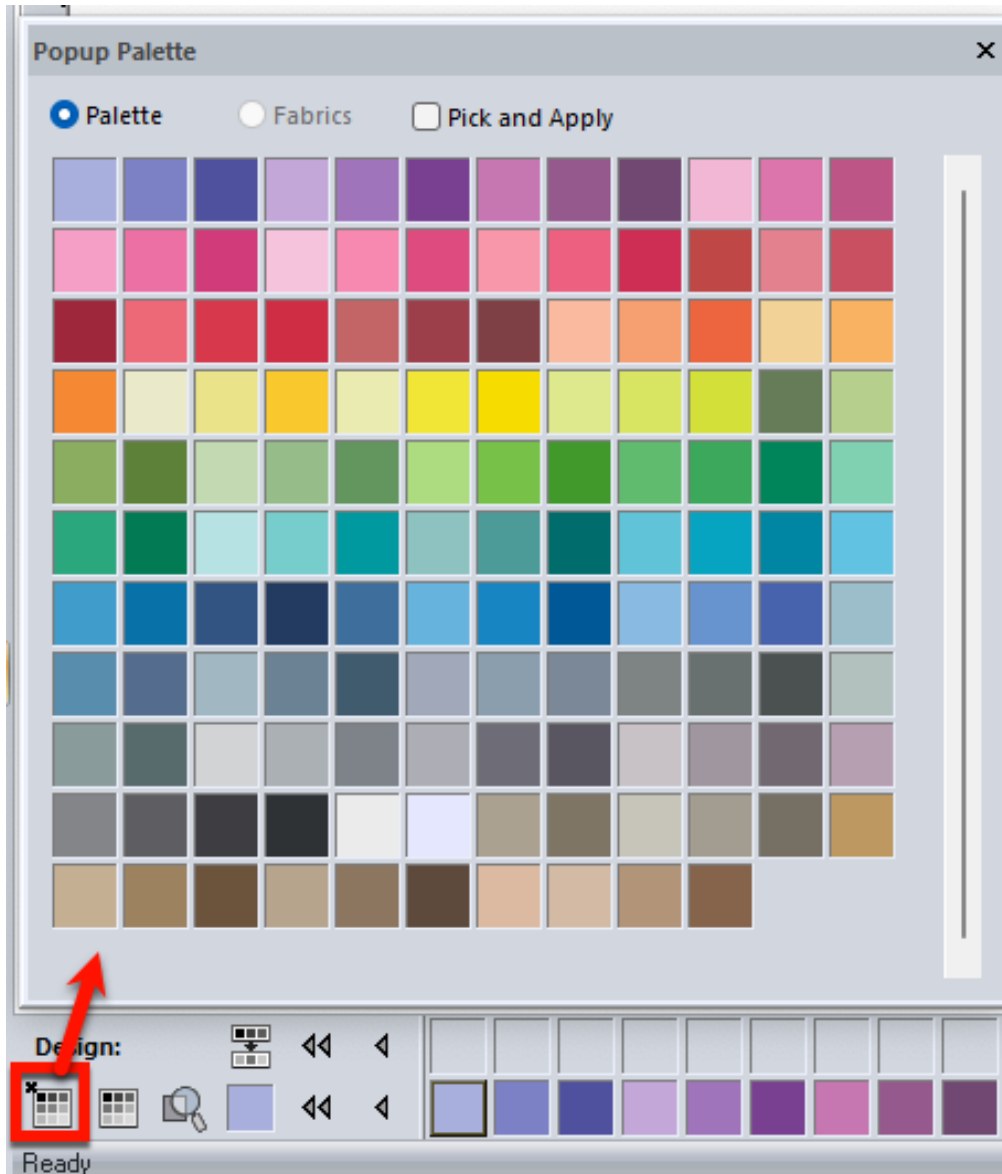
Match Palette Tool

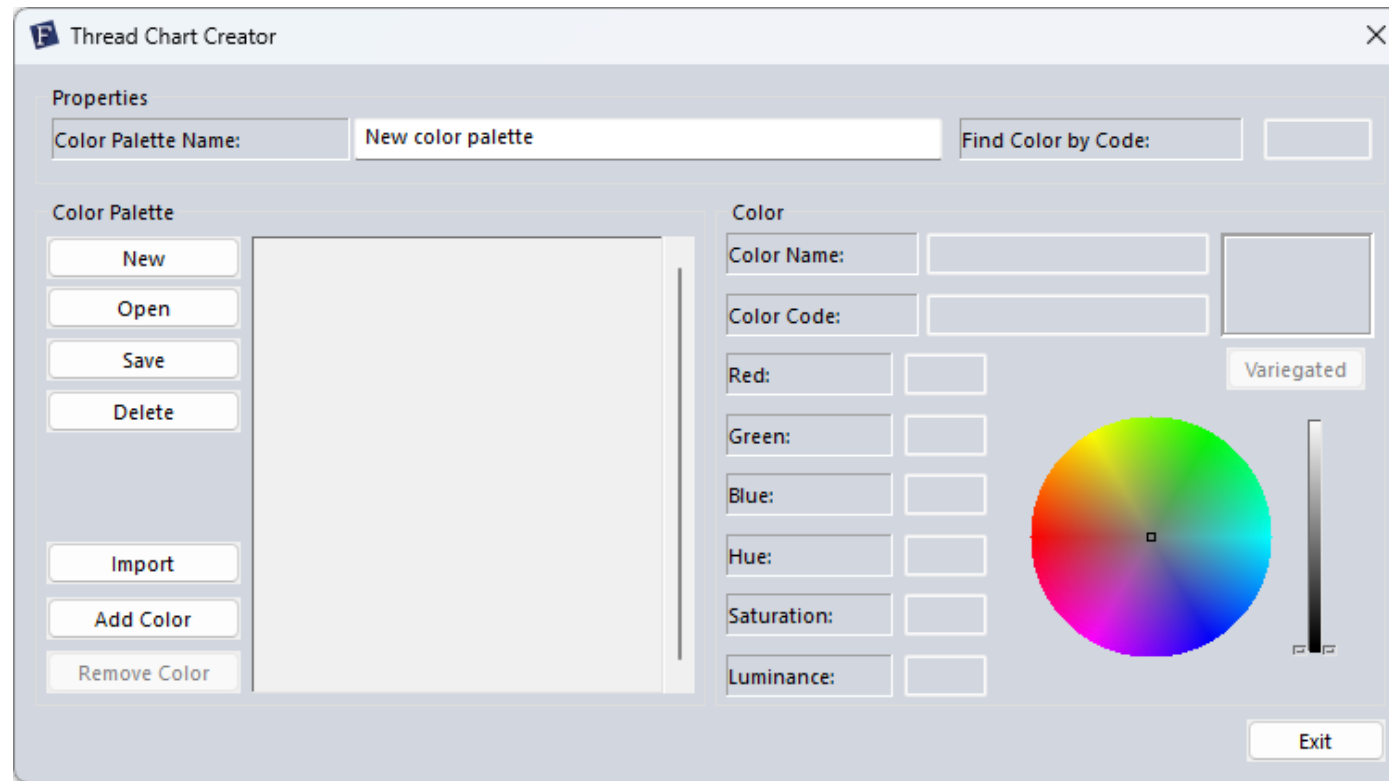
- If your design is using colors from a thread chart you want to change, the easiest way is to use the Match Palette tool. This allows you to select a thread chart you want to use, and the software will color match the design for that thread chart.



Popup Palette Feature

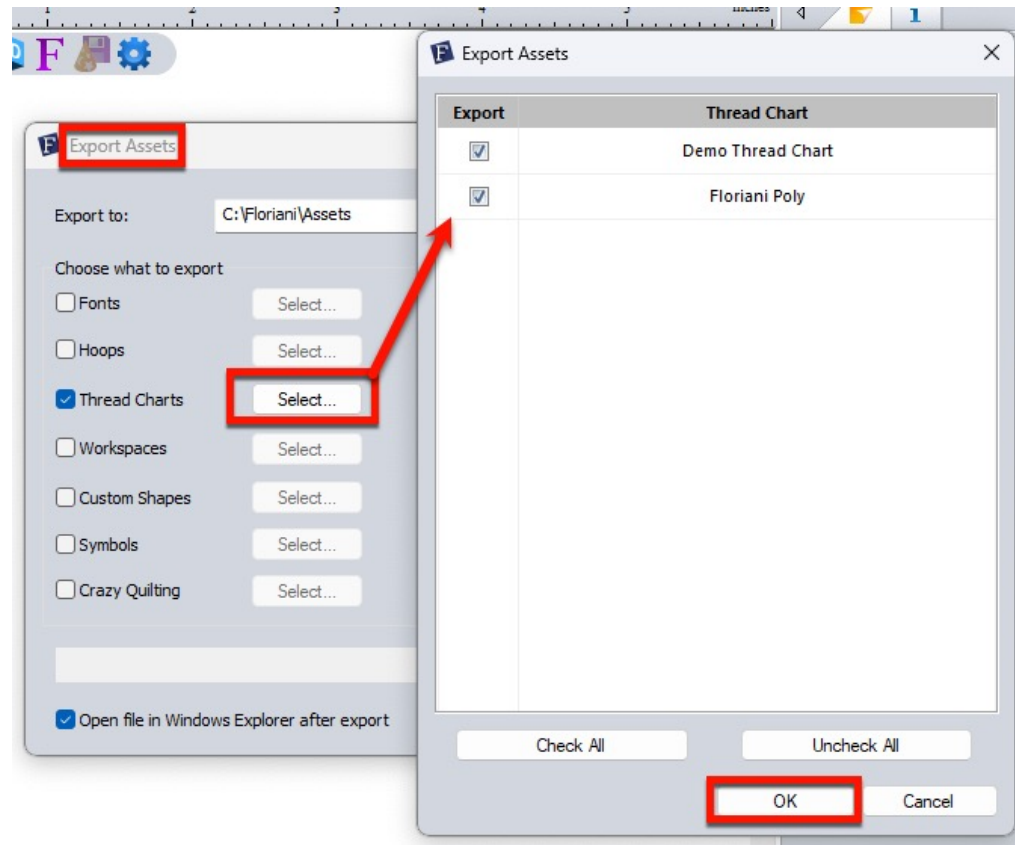
- This feature allows you to quickly select colors from your selected thread chart, view and apply fabrics to the design, and utilize the “Pick and Apply” feature that allows you to quickly change colors in a design.





How to Create Thread Charts





How to Share Thread Charts



Practice Lessons

- Guided Lesson
 - <https://digitizingmasterclass.com/docs/ftcu-guided-lesson/advanced-lessons/lesson-8-creating-custom-thread-charts/>



Changing Colors in Multi-Object Tools

- How to change colors when using tools like:
 - Applique
 - Lace Tools (Auto Lace, Auto Lace Background, Whitework Lace, Cutwork Lace)
 - Color Blends

